

Louisiana Senate Finance Committee



FY27 Executive Budget

Schedule 01 – Executive Department

01-129 – Louisiana Commission on Law Enforcement and the Administration of Criminal Justice

February 2026

*Senator Cameron Henry, President
Senator Glen Womack, Chairman*





FY27 Executive Budget

Schedule 01 — Executive Department Agencies

Executive Department

Management and
Regulatory Agencies
Supporting the
Executive Branch of
State Government

Executive Office	01-100 EXEC
Office of Indian Affairs	01-101 OIA
State Inspector General	01-102 SIG
Mental Health Advocacy Service	01-103 MHAS
Louisiana Tax Commission	01-106 LTC
Division of Administration	01-107 DOA
Coastal Protection and Restoration Authority	01-109 CPRA
Military Affairs	01-112 MILI
Office of the State Public Defender	01-116 LPDB
La. Stadium and Exposition District	01-124 LSED
La. Commission on Law Enforcement	01-129 LCLE
Office of Elderly Affairs	01-133 OEA
La. State Racing Commission	01-254 LSRC
Office of Financial Institutions	01-255 OFI



01-129 Louisiana Commission on Law Enforcement

Table of Organization

Sheriff Sid Gautreaux
Commission Chairman

Jim Craft
Executive Director

Louisiana Commission on Law Enforcement

Federal Program

Federal Discretionary Program Funds

Byrne Memorial Justice Assistance Grant

Sexual Assault Services Grant

Juvenile Accountability Block Grant

Crime Victim Assistance Grant

Violence Against Women Grant and Sexual Assault Service Grant

Juvenile Justice and Delinquency Prevention Grant



Serves the criminal justice community through state and federal law enforcement grant programs, ethics and professional standards training and education, and provision of services for crime victims.

State Program

Peace Officer Standards and Training (POST)

Truancy Assessment and Service Centers (TASC) Program

Crime Victims Reparations Program

Innocence Compensation Fund

DARE Program and Drug Abuse Education Fund

Statewide Automated Victims Notification System



01-129 Louisiana Commission on Law Enforcement

Overview and Functions

Information Systems for Statewide Utilization

La. Uniform Crime Reporting

La. Law Enforcement Management Info System

La. Victim Information Notification Everyday

Peace Officer Standards and Training Council (POST)

Research and Analysis

Statistical Analysis Center

Research studies on crime trends/issues

Information clearinghouse on crime and criminal justice

Grants

Administer state and federal grants

Enforce grant guidelines

E-grants help desk

Policy and Planning

Strategies for drug/violent crimes

Advise executive and legislative on policies

Coordinate and evaluate

Identify needs

Training

POST Program

Basic peace officer and correctional officer training

Uniform Crime Reporting training

Specialized training (homicide, sexual assault)

New chiefs training

Direct Services

Crime Victims Reparations Program

La. Automated Victim Notification Program (VINE)

Software support for law enforcement

La. Medal of Honor

POST management information systems

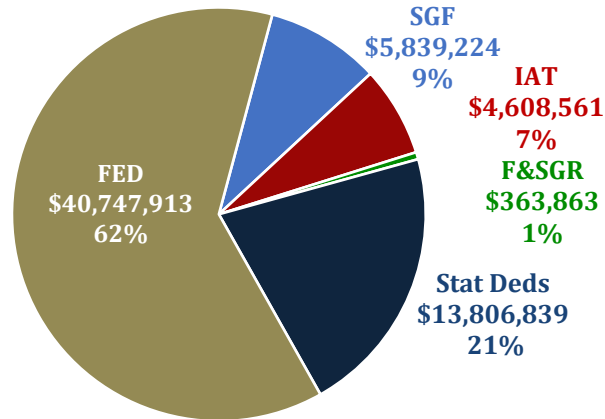
Innocence Compensation Fund



01-129 La. Commission on Law Enforcement FY27 Executive Budget Recommendations

Total FY27 Recommended Budget = \$65,366,400 and 48 authorized positions

FY27 Recommended Means of Financing



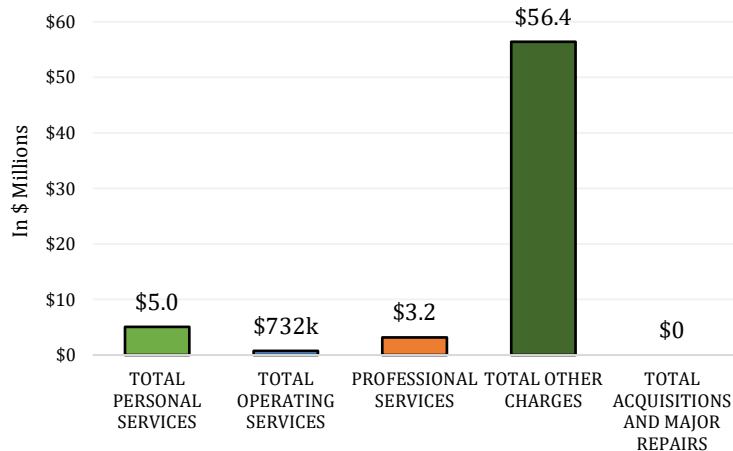
Three-year Budget Comparison	FY25 Actual	FY26 EOB as of 12-1-25	FY27 Recommended	Difference FY26 Recommended vs. FY26 EOB
Total Means of Finance	\$ 49,337,116	\$ 66,416,001	\$ 65,366,400	(\$1,049,601)
Authorized Positions	48	48	48	-

FY27 Significant Adjustments

Significant adjustments include:

- A reduction of **(\$1 million)** of State General Fund in carryforward funding for the modernization of the Integrated Criminal Justice Information System (ICJIS);
- A reduction of **(\$75,000)** in State General Fund from the 24th Judicial District Attorney's Office Truancy Program; and
- An increase of \$155,250 from the Tobacco Tax Health Care Fund to reflect the most recent REC forecast for the administration and operation of the D.A.R.E programs.

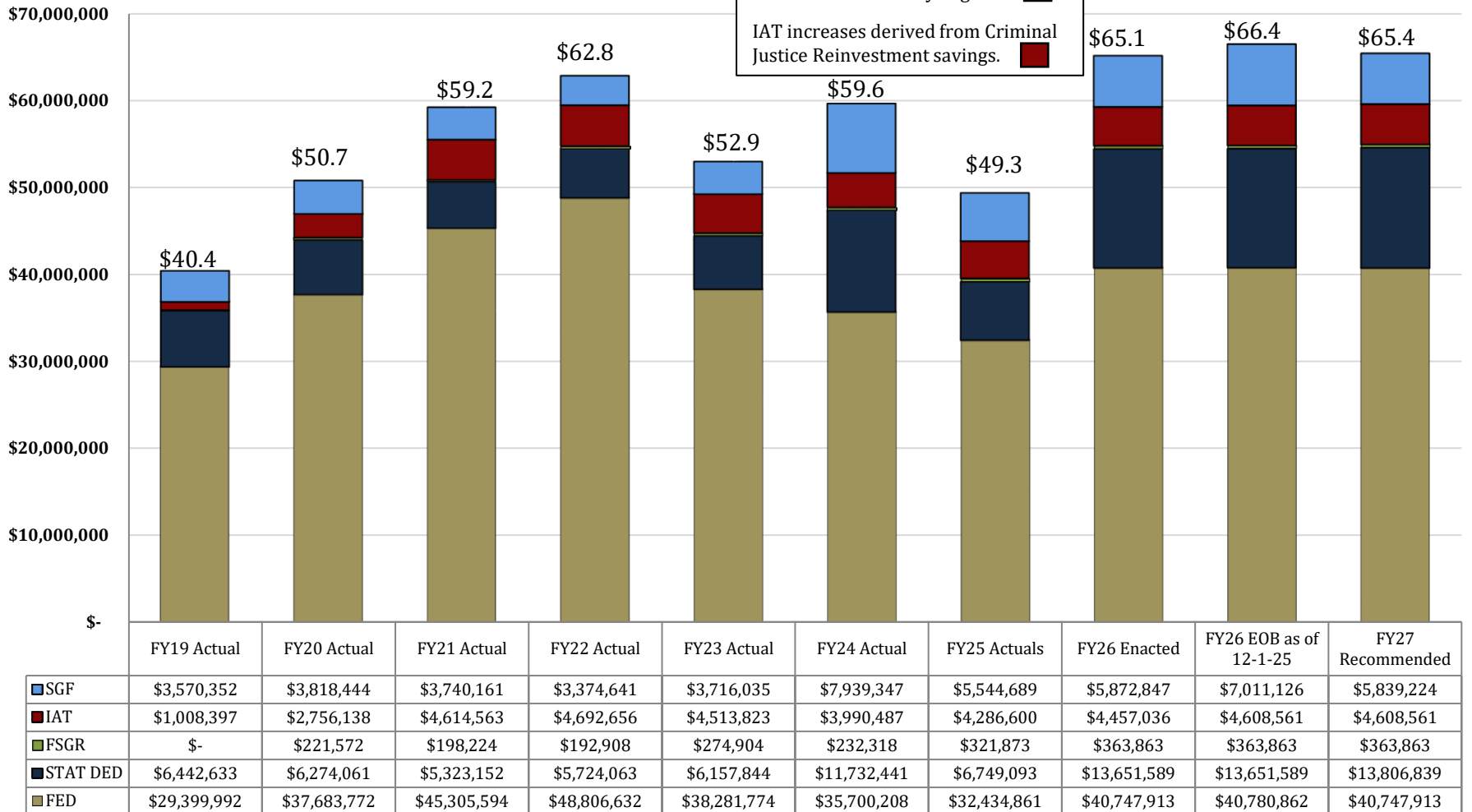
FY27 Recommended Expenditures





01-129 Louisiana Commission on Law Enforcement Changes in Funding since FY19

Total Budget by Fiscal Year and Means of Finance (in \$ millions)





01-129 Louisiana Commission on Law Enforcement Statewide Adjustments for FY27 Recommended

The following chart shows standard statewide adjustments for FY27 Recommended.

State General Fund (Direct)	Interagency Transfers	Fees and Self-generated Revenues	Statutory Dedications	Federal Funds	Total	T.O.	Adjustment
\$7,011,126	\$4,608,561	\$363,863	\$13,651,589	\$40,780,862	\$66,416,001	43	FY26 Existing Operating Budget as of 12-1-25
\$2,280	\$0	\$0	\$0	\$0	\$2,280	0	Capitol Park Security
\$2,132	\$0	\$0	\$0	\$0	\$2,132	0	Civil Service Fees
\$19,414	\$0	\$0	\$0	\$0	\$19,414	0	Civil Service Training Series
\$21,479	\$0	\$0	\$0	\$0	\$21,479	0	Group Insurance Rate Adjustment for Active Employees
\$11,405	\$0	\$0	\$0	\$0	\$11,405	0	Group Insurance Rate Adjustment for Retirees
\$1,683	\$0	\$0	\$0	\$0	\$1,683	0	Legislative Auditor Fees
\$117,745	\$0	\$0	\$0	\$0	\$117,745	0	Market Rate Classified
(\$1,138,279)	\$0	\$0	\$0	(\$32,949)	(\$1,171,228)	0	Non-recurring Carryforwards
(\$3,320)	\$0	\$0	\$0	\$0	(\$3,320)	0	Office of State Procurement
(\$110,878)	\$0	\$0	\$0	\$0	(\$110,878)	0	Office of Technology Services (OTS)
(\$11,244)	\$0	\$0	\$0	\$0	(\$11,244)	0	Related Benefits Base Adjustment
\$21,875	\$0	\$0	\$0	\$0	\$21,875	0	Rent in State-Owned Buildings
(\$42,196)	\$0	\$0	\$0	\$0	(\$42,196)	0	Retirement Rate Adjustment
(\$5,049)	\$0	\$0	\$0	\$0	(\$5,049)	0	Risk Management
\$15,844	\$0	\$0	\$0	\$0	\$15,844	0	Salary Base Adjustment
\$207	\$0	\$0	\$0	\$0	\$207	0	UPS Fees
(\$1,096,902)	\$0	\$0	\$0	(\$32,949)	(\$1,129,851)	0	Total Statewide Adjustments
(\$75,000)	\$0	\$0	\$0	\$0	(\$75,000)	0	Non-Recurring Other
\$0	\$0	\$0	\$155,250	\$0	\$155,250	0	Other Adjustments
\$5,839,224	\$4,608,561	\$363,863	\$13,806,839	\$40,747,913	\$65,366,400	43	Total FY27 Recommended Budget
(\$1,171,902)	\$0	\$0	\$155,250	(\$32,949)	(\$1,049,601)	0	<i>Total Adjustments (Statewide and Agency-Specific)</i>



01-129 Louisiana Commission on Law Enforcement Statewide Adjustments for FY27 Recommended

Non-Recurring Other Adjustments

State General Fund (Direct)	Interagency Transfers	Fees and Self-generated Revenues	Statutory Dedications	Federal Funds	Total	T.O.	Adjustment
(\$75,000)	\$0	\$0	\$0	\$0	(\$75,000)	0	Non-recurs funding for the 24th Judicial District Attorney's Office Truancy Program.
(\$75,000)	\$0	\$0	\$0	\$0	(\$75,000)	0	Total Non-Recurring Other Adjustments

Other Adjustments

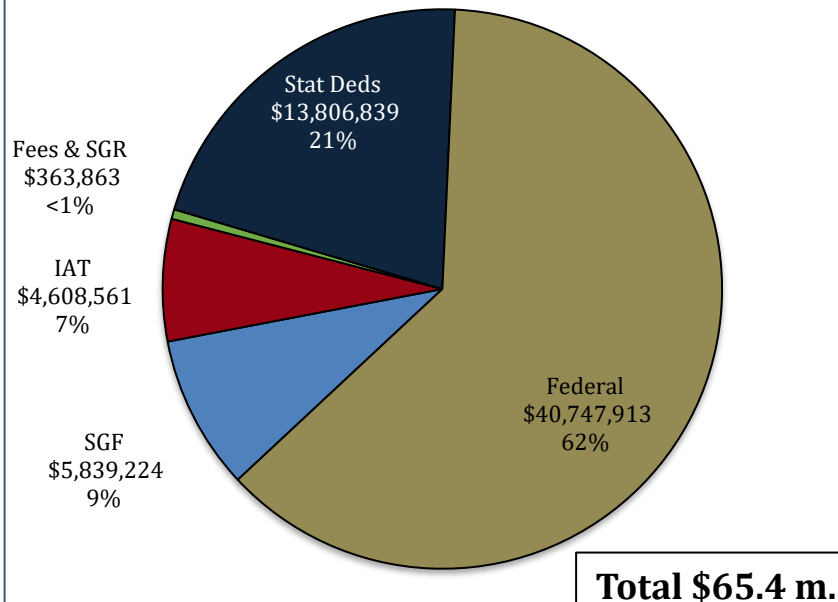
State General Fund (Direct)	Interagency Transfers	Fees and Self-generated Revenues	Statutory Dedications	Federal Funds	Total	T.O.	Adjustment
\$0	\$0	\$0	\$155,250	\$0	\$155,250	0	Adjusts Statutory Dedications out of the Tobacco Tax Health Care Fund based on the most recent Revenue Estimating Conference (REC) forecast.
\$0	\$0	\$0	\$155,250	\$0	\$155,250	0	Total Other Adjustments



01-129 Louisiana Commission on Law Enforcement Total Budget and Means of Finance

Total Funding	FY25 Actual	FY26 Enacted	FY26 EOB as of 12-1-25	FY27 Recommended	Difference FY26 EOB to FY27 Recommended
LCLE	\$ 49,337,116	\$ 65,093,248	\$ 66,416,001	\$ 65,366,400	\$ (1,049,601)
Total Positions	43	43	43	43	-

FY27 Recommended Total Means of Finance



FY27 Budget Adjustments:

Total **(\$1.05 million)** – The adjustments include a reduction of **(\$75,000)** in State General Fund from the 24th Judicial District Attorney's Office Truancy Program; an increase of \$155,250 from Tobacco Tax Health Care Fund to reflect the most recent REC forecast to be used on the DARE program; and a reduction of **(\$1,000,000)** in State General Fund carryforward funding for the Integrated Criminal Justice Information System (ICJIS).

Sources of Funding:

Interagency Transfers are from the Department of Public Safety and Corrections attributable to the savings from the criminal justice reinvestment savings.

Statutory Dedications are derived from the Crime Victims Reparations Fund, Innocence Compensation Fund, Tobacco Health Care Fund for DARE, and the Criminal Justice Priority Fund for the Integrated Criminal Justice Information System (ICJIS)

Federal Funds are from the Office of Justice Programs in the U.S. Department of Justice.



01-129 Louisiana Commission on Law Enforcement Dedicated Funds, Fees, and Fund Accounts

Dedicated Funds	FY25 Actual	FY26 Enacted	FY26 EOB as of 12-1-25	FY27 Recommended	Difference FY26 EOB to FY27 REC
Crime Victims Reparations Fund	\$3,816,451	\$5,605,788	\$5,605,788	\$5,605,788	\$0
Tobacco Tax Health Care Fund	\$1,453,501	\$1,565,801	\$1,565,801	\$1,721,051	\$155,250
Innocence Compensation Fund	\$1,479,141	\$1,480,000	\$1,480,000	\$1,480,000	\$0
Criminal Justice Priority Fund	\$0	\$5,000,000	\$5,000,000	\$5,000,000	\$0
TOTALS	\$6,749,093	\$13,651,589	\$13,651,589	\$13,806,839	\$155,250

Dedicated funds make up 21 percent of LCLE's budget for FY27 Recommended.

- The Crime Victims Reparation Fund is created in Title 46 to provide reparation awards to crime victims and to pay the expenses associated with healthcare services for victims of sexually-oriented crimes, including forensic medical examinations.
- Under the provisions of R.S. 47:841.1.C.(5), twenty percent of the monies collected from the levy of the tobacco tax on cigarettes (in this case, five-twentieths of one cent per cigarette) flows into the Tobacco Tax Health Care Fund to be used to fund the administration and operation of the Drug Abuse Resistance Education (D.A.R.E.) Program.
- The Innocence Compensation Fund is created in Title 15 to compensate those individuals who have been wrongfully convicted and imprisoned. Compensation may be awarded to these individuals provided their conviction has been vacated or reversed or if they have clear and convincing evidence that they are factually innocent of the crime of which they were convicted. Compensation was increased to \$40,000/year by Act 257 of the 2021 Regular Session.
- The Criminal Justice Priority Fund was created in R.S. 100.242 and funding is derived from the first \$100 million deposited into the Criminal Justice and First Responder Fund in accordance R.S. 100.251 (Act 723 of the 2024 Regular Session). Funding in LCLE is used for the modernization of the Integrated Criminal Justice Information System (ICJIS).

Fees and Self-generated Dedicated Fund Account	FY25 Actual	FY26 Enacted	FY26 EOB as of 12-1-25	FY27 Recommended	Difference FY26 EOB to FY27 Recommended
Drug Abuse Education and Treatment Fund Account	\$321,873	\$363,863	\$363,863	\$363,863	\$0
Totals	\$321,873	\$363,863	\$363,863	\$363,863	\$0



Categorical Expenditures

Examples of Categories

Departments expend funding in the five major categories listed below.

Personal Services

- Salaries – Regular, overtime, and termination pay for Classified and Unclassified personnel.
- Other Compensation – Wages, student labor, compensation for board members and/or board of trustees, evening instruction, university instructors, etc.
- Related Benefits – Retirement contributions, post-retirement contributions/benefits, FICA tax, Medicare tax, group insurance contributions, compensated absences, other related benefits, taxable fringe benefits, etc.

Total Operating Expenses

- Travel – In-state and Out-of-state, including meal reimbursement.
- Operating Services – Advertising, printing, insurance, maintenance, rentals, data processing, internet costs, dues and subscriptions, mail delivery, telephones, data lines, vehicle tracking and telematics, utilities, depreciation, amortization, banking services, credit card fees, etc.
- Supplies – office supplies and equipment, computers, clothing and uniforms, medical, pharmaceutical, food, automotive, repair and maintenance, software, etc.

Professional Services – Accounting, auditing, management consulting, engineering, architectural, legal, medical and dental, veterinary, information technology, etc.

Total Other Charges

- Other Charges – Aid to school boards, local government, etc.; public assistance; miscellaneous charges; judgments, fines, and penalties; interest on judgments; punitive/compensatory damages; OC personal services, operating expenses, professional services; contract attorney expenses; recoupments; furlough; contractual services; interest expense; claim payments; commercial group insurance; reinsurance; loans issued; disbursements; etc.
- Debt Service – Principal, interest, related charges, reserve requirement, amortization, and bond premiums.
- Interagency Transfer Line-Item Expenditure – Any expenses paid for with Interagency Transfers – from commodities and services to equipment.

Acquisitions and Major Repairs

- Acquisitions – Land; buildings; automobiles; aircraft; accessories; equipment; software; hardware; farm and heavy equipment; boats; capital outlay expenditures; construction; etc.
- Major Repairs – Land improvement; buildings; automotive; grounds; boats; aircraft; movable equipment; farm equipment; medical; office; library; education; recreation; communication; other equipment; pollution remediation; etc.



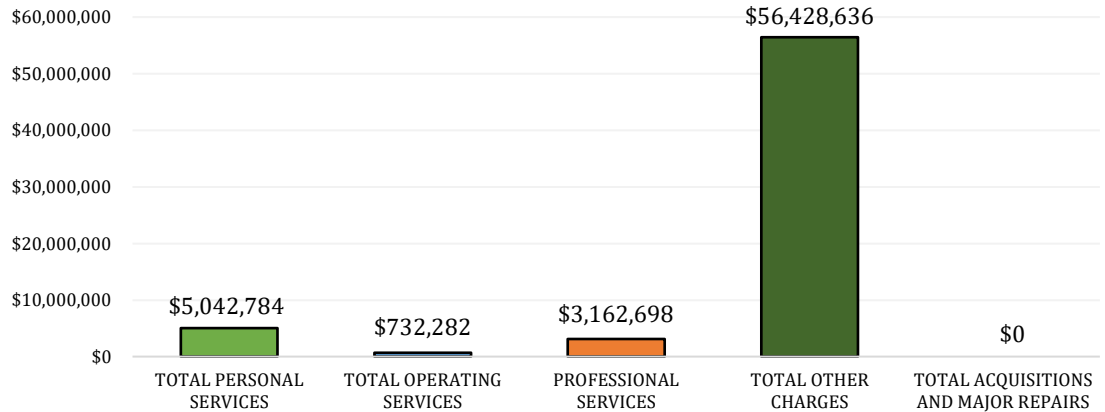
01-129 Louisiana Commission on Law Enforcement Categorical Expenditures at FY27 Recommended

The largest expenditure category in LCLE for FY27 Recommended is Other Charges at 83 percent of the budget.

Within this category, the Other Charges line item makes up 97 percent of expenditures, while Interagency Transfers contribute 4 percent. These expenses are listed on upcoming slides.

Total Personal Services expenses are 5 percent of the Total Expenditures, with Salaries comprising 63 percent and Related Benefits 34 percent.

FY27 Recommended Expenditures



Categorical Expenditures	FY25 Actual	FY26 Enacted	FY26 EOB as of 12/01/25	FY27 Recommended	Difference FY26 EOB vs. FY27 REC
Salaries	\$2,794,794	\$3,062,209	\$3,062,209	\$3,181,956	\$119,747
Other Compensation	\$41,020	\$162,423	\$162,423	\$162,423	\$0
Related Benefits	\$1,529,597	\$1,685,705	\$1,685,705	\$1,698,405	\$12,700
TOTAL PERSONAL SERVICES	\$4,365,411	\$4,910,337	\$4,910,337	\$5,042,784	\$132,447
Travel	\$107,784	\$182,700	\$182,700	\$182,700	\$0
Operating Services	\$449,377	\$444,419	\$541,728	\$444,419	(\$97,309)
Supplies	\$70,674	\$105,163	\$105,163	\$105,163	\$0
TOTAL OPERATING EXPENSES	\$627,835	\$732,282	\$829,591	\$732,282	(\$97,309)
PROFESSIONAL SERVICES	\$459,965	\$2,415,698	\$3,195,617	\$3,162,698	(\$32,919)
Other Charges	\$41,837,812	\$54,992,601	\$55,438,126	\$54,477,376	(\$960,750)
Debt Service	\$0	\$0	\$0	\$0	\$0
Interagency Transfers	\$2,006,519	\$2,042,330	\$2,042,330	\$1,951,260	(\$91,070)
TOTAL OTHER CHARGES	\$43,844,331	\$57,034,931	\$57,480,456	\$56,428,636	(\$1,051,820)
Acquisitions	\$39,574	\$0	\$0	\$0	\$0
Major Repairs	\$0	\$0	\$0	\$0	\$0
TOTAL ACQ. & MAJOR REPAIRS	\$39,574	\$0	\$0	\$0	\$0
TOTAL EXPENDITURES	\$49,337,116	\$65,093,248	\$66,416,001	\$65,366,400	(\$1,049,601)



01-129 Louisiana Commission on Law Enforcement FY27 Categorical Expenditures Detail

Professional Services

Amount	Description
\$2,650,000	Louisiana Victim Information and Notification Everyday (LAVINE) - monitoring the custody status of adult inmates in all parish jails and state prisons
\$172,099	Contract psychologist for crime victims
\$154,500	Legal services contracts
\$151,099	Consulting contract related to Crime Victims Reparations (CVR) system management
\$35,000	E-Grants Management System
\$3,162,698	Total Professional Services

Interagency Transfers Expenses

Amount	Description
\$529,696	Department of Justice - Juvenile Justice Programs
\$300,473	Office of Juvenile Justice
\$270,000	Department of Public Safety - State Police
\$183,000	Department of Public Safety and Corrections - Special Corrections Projects
\$160,375	Division of Administration - Rent in State-owned Buildings
\$195,641	Telephone and Data Service - Office of Technology Services
\$103,732	Office of Technology Services (OTS) Fees
\$50,000	Louisiana Public Defender Board - Case Management System
\$66,934	Office of Risk Management (ORM) Fees
\$35,444	Legislative Auditor Fees
\$21,402	Civil Service Fees
\$18,650	Capitol Park Security Fees
\$6,700	Printing - Office of Technology Services
\$4,599	Office of State Procurement (OSP) Fees
\$2,773	Uniform Payroll System (UPS) Fees
\$1,841	Louisiana Property Assistance Agency - GPS
\$1,951,260	Total Interagency Transfers Expenses



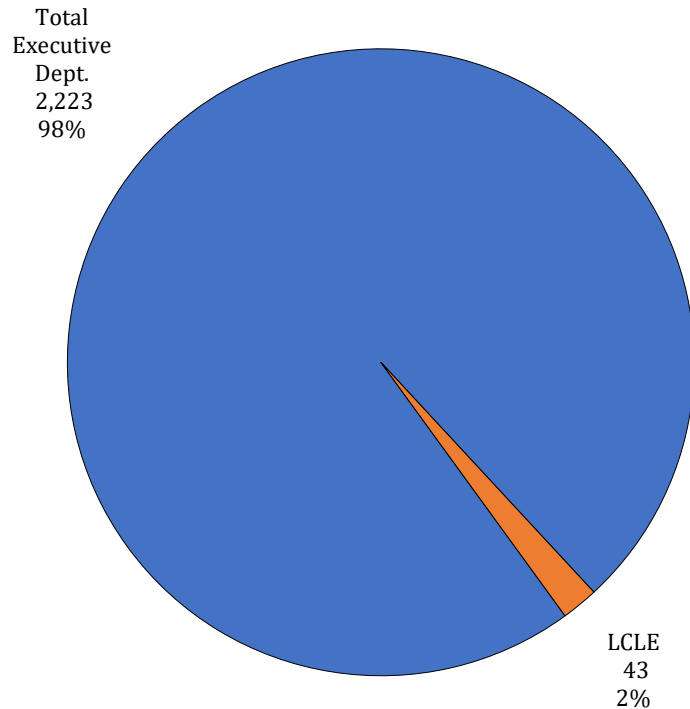
01-129 Louisiana Commission on Law Enforcement FY27 Categorical Expenditures Detail

Amount	Description	Amount	Description
\$23,927,513	Crime Victims Assistance (CVA) Program for aid to local criminal justice agencies assisting the victims of crime	\$684,182	Training requirements for local law enforcement officers for the Peace Officers Standards and Training Program (POST)
\$5,235,142	Drug Control and Improvement Formula - Byrne JAG (Byrne Memorial) for aid to local criminal justice agencies to combat the drug problem through apprehension, prosecution and adjudication of drug offenders	\$534,555	Federal Sexual Assault Services Formula Program (SASP) for intervention, advocacy, accompaniment, support services, and related assistance to adult, youth, and child victims of sexual assault
\$5,000,000	Integrated Criminal Justice Information System (ICJIS) - Criminal Justice Priority Fund - statewide integration of data and information generated by and shared across law enforcement, court systems, and statewide databases	\$500,000	Stop School Violence Prevention and Project Safe Neighborhood grants
\$4,608,561	Criminal Justice Reform Reinvestment (L.R.S. 15:827.3) - grants to the Family Justice Center, payment of crime victims' compensation claims, crime labs, Sexual Assault Nurse Examiner (SANE) nurses, and sheriff's offices	\$462,200	Federal Crime Victims Compensation Assistance (CVC) Program
\$3,839,219	Truancy Assessment and Services Centers - awards to local districts for use in fighting truancy; tailored to at-risk children in grades K to 5	\$340,154	Juvenile Justice and Delinquent Prevention (JJDP) Act for aid to local criminal justice agencies
\$2,315,229	State awards from the Crime Victims Reparations (CVR) Act to provide financial relief to crime victims	\$215,000	Drug Abuse Education and Treatment (DAET) grants assistance to local public and non-profit agencies in developing drug abuse prevention and treatment programs
\$1,744,410	Federal Violence Against Women Act (VAWA) grants to governmental entities to develop and strengthen prosecution strategies to combat violent crimes against women	\$203,427	National Criminal History Improvement Program (NCHIP) grant to improve the state's criminal history records system and participate in the national instant criminal background check system
\$1,525,798	Drug Abuse Resistance Education (DARE) grants to local agencies to conduct drug abuse resistance classes in participating school districts throughout the state	\$172,993	Federal Juvenile Accountability Information Block Grant (JAIBG) to provide states and local governments with funds to promote greater accountability in the juvenile justice system
\$1,480,000	Innocence Compensation Fund - Compensation to eligible persons who have suffered the experience of being wrongfully incarcerated for the loss of life opportunities	\$97,450	Federal Residential Substance Abuse Treatment (RSAT) grant to provide financial assistance to local governments for the development and implementation of substance abuse programs in state and local correctional and detention facilities
\$734,946	DNA Capacity (Capacity Enhancement for Backlog Reduction (CEBR) Program)	\$95,481	Paul Coverdell grant to improve the quality and timeliness of forensic science and medical examiner services and/or eliminate backlogs of forensic evidence
\$711,116	National Instant Criminal Background Check System (NICS) grant for to local criminal justice agencies for dertermining prospective buyer eligibility to buy firearms or explosives	\$50,000	Human Trafficking and Sexual Assault Training Program
\$54,477,376		Total Other Charges	



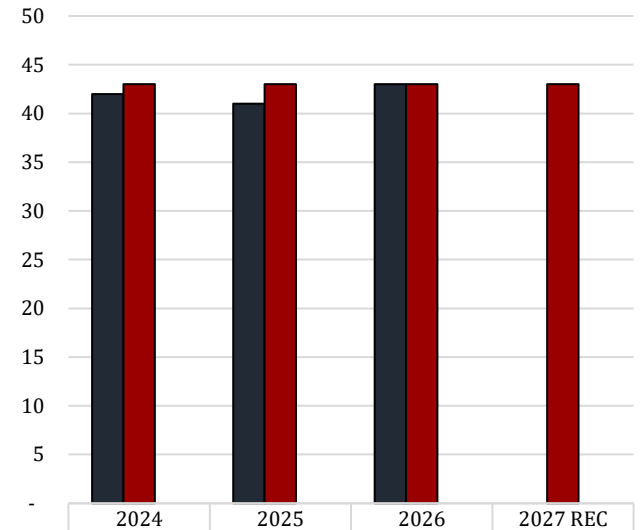
01-129 Louisiana Commission on Law Enforcement FTEs, Authorized T.O., and Other Charges Positions

**FY27 Agency Employees
as a portion of
FY27 Total Department Employees**



FY26 number of funded, but not filled,
positions as of January 5, 2026 = 0

**Number
and
Types
of
Positions**



The full-time equivalent or **FTE** definition refers to the number of hours considered full-time. For example, if an agency considers 40 hours full time, and there are two employees working 20 hours per week, those two employees would be 1.0 FTE.

Authorized Positions are those referred to in the Table of Organization (or T.O.) for each department. This count includes only those positions paid for from the Salaries expenditure category for the organization units and agencies included in each department's appropriation. This excludes positions paid for from other expenditure categories, such as wages or per diem.

Other Charges positions are authorized under R.S. 39:2(5)(b) ...

(5)(b) "Authorized other charges positions" means the number of positions in an appropriation bill to be funded by the other charges continuing category of the accounting system for the state. The number may be adjusted during a fiscal year in accordance with law.

- [Act 377 of 2013 by Rep. Burrell]
- Positions coded in the Other Charges expenditure category
- These positions are usually associated with federal grants



01-129 Louisiana Commission on Law Enforcement Related Employment Information

Salaries and Related Benefits for the Authorized Positions are listed below in Chart 1.
In Chart 2, benefits are broken out to show the portion paid for active versus retired employees.
This is where payments for the Unfunded Accrued Liability (UAL) can be found.

1.

Personal Services	2024 Actual	2025 Actual	2026 Enacted	2027 Recommended
Salaries	\$2,658,151	\$2,794,794	\$3,062,209	\$3,181,956
Other Compensation	\$62,101	\$41,020	\$162,423	\$162,423
Related Benefits	\$1,637,165	\$1,529,597	\$1,685,705	\$1,698,405
Total Personal Services	\$4,357,417	\$4,365,411	\$4,910,337	\$5,042,784

Average T.O. Salary = \$77,743

Examples of Other Compensation include pay for WAE employees, part-time employees, student workers, etc.

2.

Related Benefits FY27 Recommended	Total Funding	%
Total Related Benefits	\$1,698,405	
UAL payments	\$695,881	41%
Retiree Health Benefits	\$239,490	
Remaining Benefits*	\$763,034	
Means of Finance	General Fund = 15%	Other = 85%

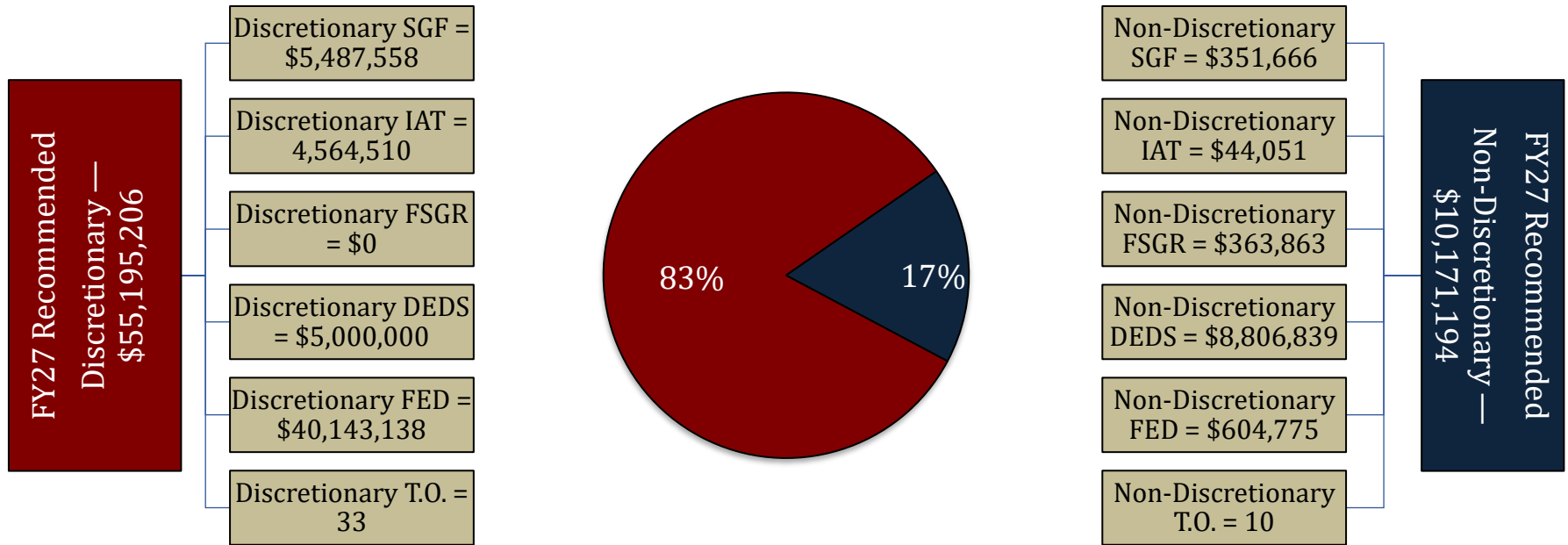
Department Demographics	Total	%
Gender		
Female	31	76
Male	10	24
Race/Ethnicity		
White	21	51
Black	19	47
Asian	1	2
Indian	--	--
Hawaiian/Pacific	--	--
Declined to State	--	--
Currently in DROP or Eligible to Retire	6	15

* Remaining Benefits include employer contribution to authorized positions' retirement, health, Medicare, FICA, Emoluments etc. The authorized positions include authorized T.O. positions and authorized other charges positions, both filled and vacant.

Other Charges Benefits
\$0



01-129 Louisiana Commission on Law Enforcement FY27 Discretionary/Non-Discretionary Comparison



Total Discretionary Funding by Office		
Executive Office	\$22,987,131	0.47%
Office of Indian Affairs	\$0	0.00%
Office of Inspector General	\$4,994,198	0.10%
Mental Health Advocacy Service	\$0	0.00%
LA Tax Commission	\$4,607,810	0.09%
Division of Administration	\$1,566,774,963	31.95%
Coastal Protection and Restoration Authority	\$142,810,046	2.91%
Department of Military Affairs	\$2,858,097,876	58.28%
Office of the State Public Defender	\$48,570,384	0.99%
Louisiana Stadium and Exposition District	\$98,646,839	2.01%
Louisiana Commission on Law Enforcement	\$55,195,206	1.13%
Governor's Office of Elderly Affairs	\$70,806,595	1.44%
Louisiana State Racing Commission	\$17,277,796	0.35%
Office of Financial Institutions	\$13,069,094	0.27%
Total Discretionary	\$4,903,837,938	100.00%

Total Non-Discretionary Funding by Type		
Required by Constitution: Retirement Systems UAL	\$695,881	6.8%
Statutory Obligations: DARE, DAET, Crime Victims Reparations Fund, human trafficking training for law enforcement	\$7,560,004	74.3%
Court Order: Innocence Compensation Fund for wrongly incarcerated victims	\$1,480,000	14.6%
Unavoidable Obligations: Retirees' Group Insurance, Legislative Auditor Fees	\$274,934	2.7%
Needed to pay Debt Service: Rent in State Buildings	\$160,375	1.6%
Total Non-Discretionary	\$10,171,194	100%



01-129 Louisiana Commission on Law Enforcement Truancy Program Subgrantees

Agency:	Award:
16th Judicial District Attorney's Office	\$250,000
21st Judicial District Court	\$250,000
24th Judicial District Attorney's Office	\$550,000
26th Judicial District Attorney's Office	\$400,000
36th Judicial District Attorney's Office	\$150,000
Calcasieu Parish Police Jury-Office of Juvenile Justice Services	\$200,000
East Baton Rouge Parish Truancy Assessment, Inc.	\$500,000
Lincoln Parish School Board	\$225,000
Vermillion Parish School Board	\$150,000
Youth Service Bureau of St. Tammy	\$250,000
Caddo-Volunteers for Youth Justice	\$400,000
St. Landry Parish School Board	\$150,000
Lafayette TASC Program	\$150,000
St. Charles TASC Program	\$150,000
Louisiana Commission on Law Enforcement	\$100,000
Total	\$3,875,000

LCLE's TASC (Truancy and Assessment Service Centers) is a program designed "to provide early identification and assessment of truants and the prompt delivery of coordinated interventions to prevent continued unauthorized school absences."

Truancy has been linked to academic and behavioral problems, school dropout, and delinquency. The goal of the TASC program, as identified by LCLE, is to provide:

- Early identification of truant children and appropriate assessment
- Rapid, coordinated, targeted service response to identified needs
- Consistent, timely monitoring and revising of service plans
- Attention to family environmental factors affecting the child